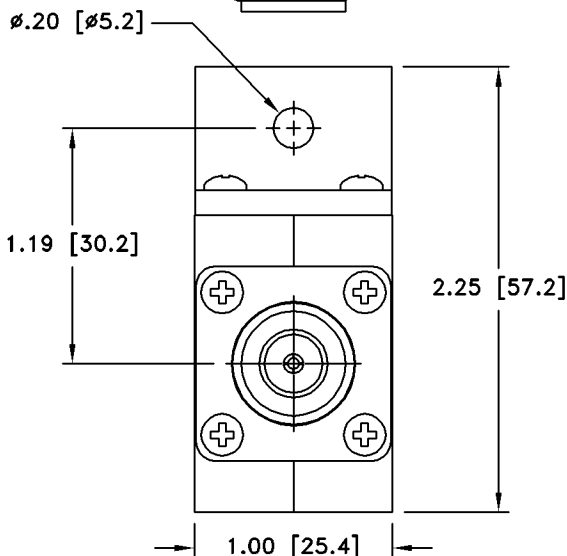
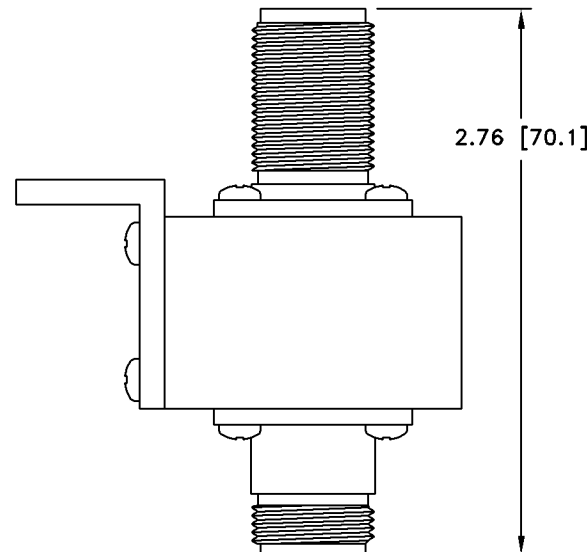
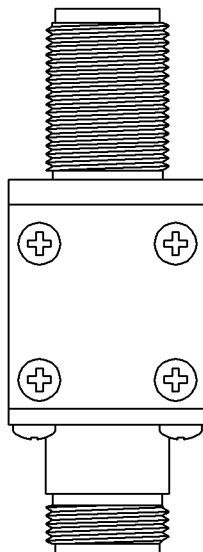
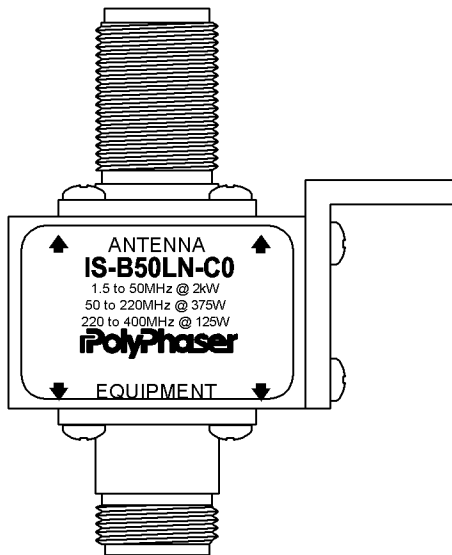


ALL DESIGN, OPERATIVE AND PROCESS DATA PERTAINING TO THE ARTICLE SHOWN ON THIS SHEET IS THE PROPERTY OF POLYPHASER CORPORATION. THE INFORMATION IS NOT TO BE COPIED, REPRODUCED, REVEALED TO OR APPROPRIATED BY OTHERS WITHOUT THE EXPRESS WRITTEN CONSENT OF POLYPHASER CORPORATION.

These commodities or technology are exported from the U.S. in accordance with the Export Administration Regulations. Diversion contrary to U.S. law prohibited.

REVISIONS				
REV LTR	DATE	ENG	MKTG	Q.A.
E	03/05/07	AD	-	-



**MAXIMUM CHARACTERISTICS**

APPLICATION:  
 BULKHEAD MOUNT  
 FREQUENCY RANGE:  
 1.5MHz TO 400MHz  
 TURN ON:  
 600 Vdc  $\pm$ 20%  
 VSWR:  
 $\leq 1.2:1$  @ 1.5MHz TO 2MHz  
 $\leq 1.1:1$  @ 2MHz TO 400MHz  
 INSERTION LOSS:  
 $\leq 0.1$ dB OVER FREQUENCY RANGE  
 MAX POWER:  
 2kW @ 1.5MHz TO 50MHz  
 375W @ 50MHz TO 220MHz  
 125W @ 220MHz TO 400MHz  
 THROUGHPUT ENERGY:  
 $\leq 10$ mJ FOR 3kA, 8/20 $\mu$ s WAVEFORM  
 OPERATING TEMPERATURE:  
 +50°C  
 STORAGE TEMPERATURE:  
 -45°C TO +85°C  
 VIBRATION:  
 1G UP TO 100Hz

**COURTESY OF**



**Wadsworth Sales Inc.**  
 Bryan Wadsworth  
 Cell 815-790-4494  
 Fax 815-363-6056  
[www.wadsworthsales.com](http://www.wadsworthsales.com)



**CALL 1-815-790-4494**

CUSTOMER APPROVAL: \_\_\_\_\_ DATE: \_\_\_\_\_  
 ALL DIMENSIONS SHOWN ABOVE ARE FOR REFERENCE ONLY.

DRAFTER D. SCHARMANN	DATE 02/03/93
MECH ENGINEER - - - -	DATE - - -
ELEC ENGINEER J. JONES	DATE 02/03/93
MARKETING - - - -	DATE - - -
QUALITY DEPT N. JOHN	DATE 02/03/93

<b>PolyPhaser</b>			
<small>P.O. BOX 9000 MINDEN, NY 89423 TEL: 775-782-2511 FAX: 775-782-4476</small>			
<small>DWG NO/PART NO/DESCRIPTION</small>			
IS-B50LN-C0			
CUSTOMER PRINT			
<small>CAGE CODE</small> 61114	<small>FILE NAME</small> -C1	<small>SCALE</small> 1/1	<small>SHEET</small> 1 OF 1