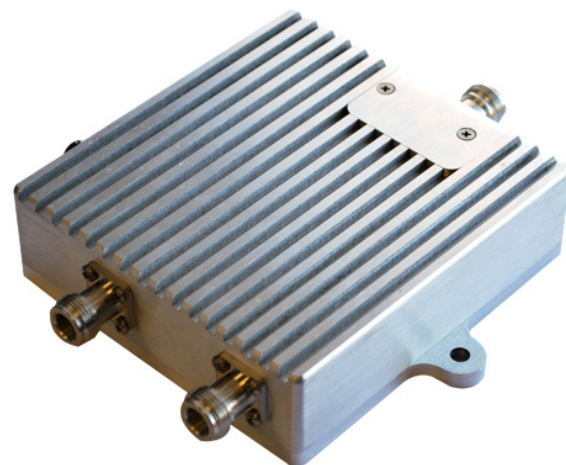


Pico Cell Amplifier

Shireen Inc. introduces a state of the art cellular solution in 1800MHz band for hard to reach places. The Pico Cell Amplifier as it is called, amplifies the uplink as well as downlink frequencies of a mobile base station. The unit is directly connected to mobile BTS hence providing more signal in spotty areas. Applications exist in and are not limited to in-building/remote areas, Marine & Aviation, public spaces, disaster hit areas etc.

The Pico Cell Amplifier has a full duplex operation, thus ensuring uninterrupted voice and data connections with the subscribers of the BTS. This Amplifier falls in the Tower mount amplifier category, where in it is connected directly to the output of the BTS. The Pico Cell Amplifier has two inputs one for Uplink Freq. and one for Downlink Freq. the amplified output is available at a single output connector; this eliminates the use of two antennas at the BTS.

Being a Linear Amplifier, the Pico Cell Amplifier can be used with any technology utilizing the mentioned frequency range.



ELECTRICAL SPECIFICATIONS

Frequency Range:	Uplink: 1710-1785MHz Downlink: 1805-1880Mhz
Technology:	GSM 1800/EDGE 8PSK(MCS5-9)
Operation:	Full Duplex
Downlink Output Power:	15 Watts
Downlink Power Gain:	23dB (+/- 2dB)
Uplink Power Gain:	30dB (+/- 2dB)
Uplink Noise Figure:	better than 3dB
I/O Impedance:	50 OHms
Power Consumption:	24 ~ 28 VDC 440mA (Receivable Mode); 1.5A (Transmit Mode - Max Pout)
RF Connections:	Type N



**Wadsworth
Sales Inc.**

Bryan Wadsworth

Cell 815-790-4494

Fax 815-363-6056

www.wadsworthsales.com

MECHANICAL SPECIFICATIONS

Dimensions:	5.8" x 6.3" x 1.5" (148mm x 161mm x 37mm)
Weight	2lb. 40z. (1.0 kg)
Operation Temp:	-40 °C to + 70 °C
Enclosure:	Watertight machined aluminum housing with Anodized finish